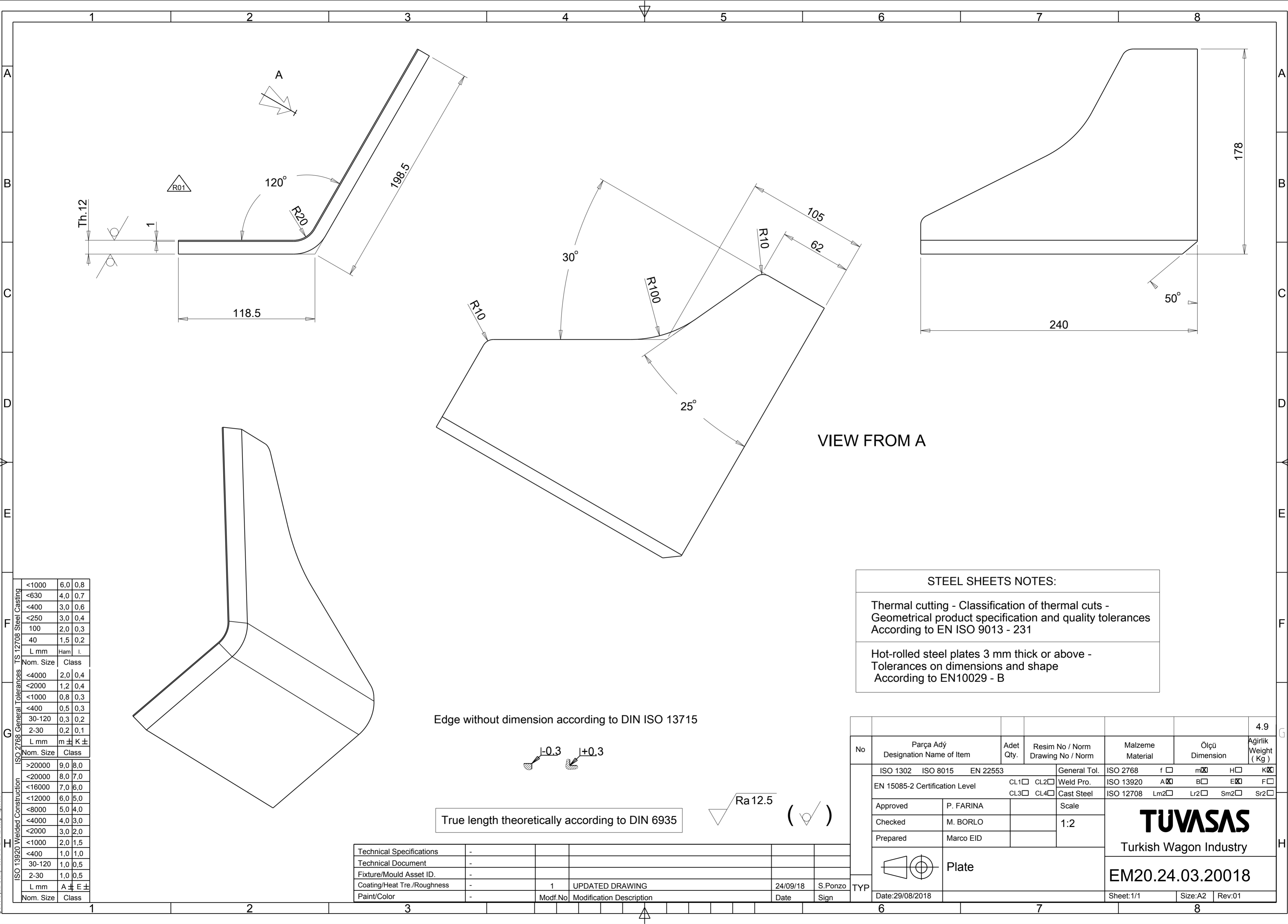


Reproduction, dissemination or use of this document or its all contents in any form without the prior written permission of TÜVASAS, is prohibited. Offenders will be liable for the payment of damages. All rights reserved in the event of the grant of a patent, utility model or commercial design registration.



ISO 13920 Welded Construction	<1000	6,0	0,8
	<630	4,0	0,7
	<400	3,0	0,6
	<250	3,0	0,4
ISO 2768 General Tolerances	100	2,0	0,3
	40	1,5	0,2
	L mm	Ham	I.
	Nom. Size	Class	
TS 12708 Steel Casting	<4000	2,0	0,4
	<2000	1,2	0,4
	<1000	0,8	0,3
	<400	0,5	0,3
ISO 13920 Welded Construction	30-120	0,3	0,2
	2-30	0,2	0,1
	L mm	m ±	K ±
	Nom. Size	Class	
ISO 13920 Welded Construction	>20000	9,0	8,0
	<20000	8,0	7,0
	<16000	7,0	6,0
	<12000	6,0	5,0
ISO 13920 Welded Construction	<8000	5,0	4,0
	<4000	4,0	3,0
	<2000	3,0	2,0
	<1000	2,0	1,5
ISO 13920 Welded Construction	<400	1,0	1,0
	30-120	1,0	0,5
	2-30	1,0	0,5
	L mm	A ±	E ±
ISO 13920 Welded Construction	Nom. Size	Class	

Edge without dimension according to DIN ISO 13715

±0.3 ±0.3


True length theoretically according to DIN 6935

Ra 12.5

STEEL SHEETS NOTES:

Thermal cutting - Classification of thermal cuts -
Geometrical product specification and quality tolerances
According to EN ISO 9013 - 231

Hot-rolled steel plates 3 mm thick or above -
Tolerances on dimensions and shape
According to EN10029 - B

							4.9	
No	Parça Adý Designation Name of Item	Adet Qty.	Resim No / Norm Drawing No / Norm	Malzeme Material	Ölçü Dimension	Ağırlık Weight (Kg)		
TYP	ISO 1302 ISO 8015 EN 22553	General Tol.		ISO 2768	f <input type="checkbox"/>	m <input checked="" type="checkbox"/>	H <input type="checkbox"/>	K <input checked="" type="checkbox"/>
	EN 15085-2 Certification Level	CL1 <input type="checkbox"/> CL2 <input type="checkbox"/>	Weld Pro.	ISO 13920	A <input checked="" type="checkbox"/>	B <input type="checkbox"/>	E <input checked="" type="checkbox"/>	F <input type="checkbox"/>
	Approved	P. FARINA	CL3 <input type="checkbox"/> CL4 <input type="checkbox"/>	Cast Steel	ISO 12708	Lm2 <input type="checkbox"/>	Lr2 <input type="checkbox"/>	Sm2 <input type="checkbox"/> Sr2 <input type="checkbox"/>
	Checked	M. BORLO		Scale	<div>TUVASAS</div> <div>Turkish Wagon Industry</div>			
	Prepared	Marco EID		1:2				
		Plate			EM20.24.03.20018			
Date:29/08/2018				Sheet:1/1	Size:A2	Rev:01		